

Radio
Receivers

Remotes

Gate
Controllers

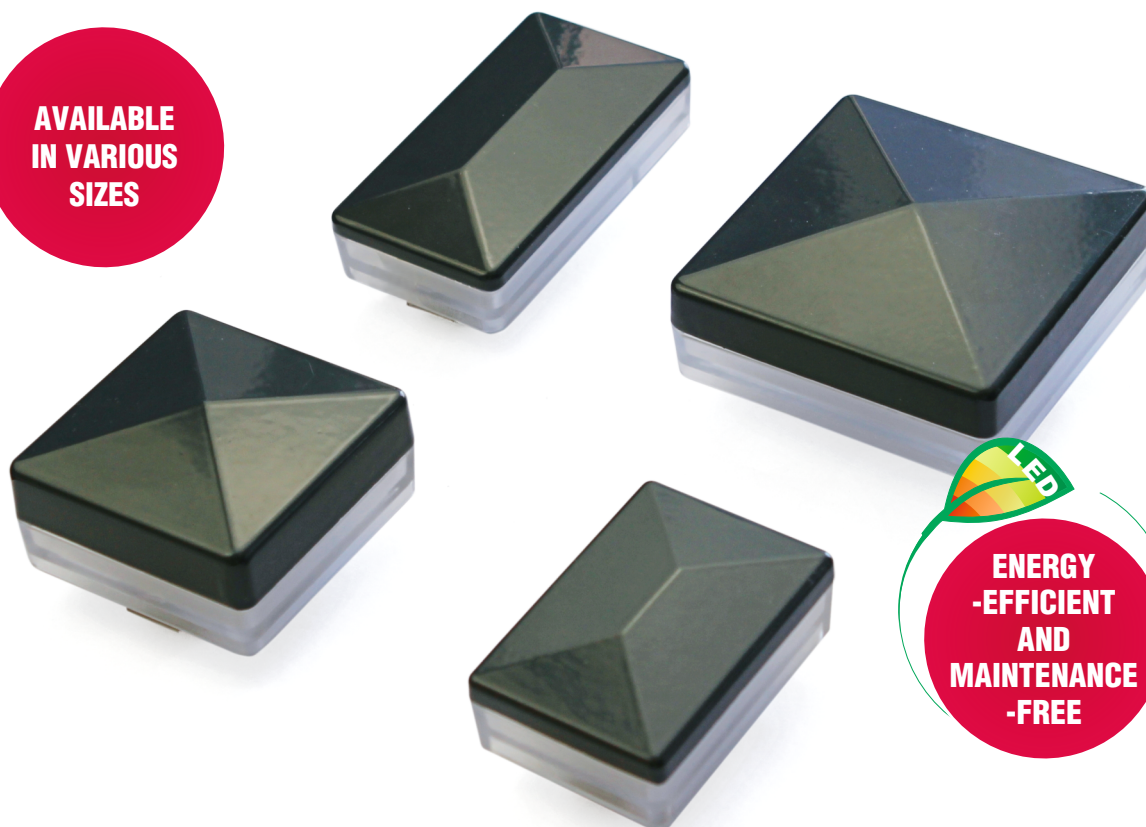
Gate
Automation
Accessories

Gate
Motors

Access
Control



**AVAILABLE
IN VARIOUS
SIZES**



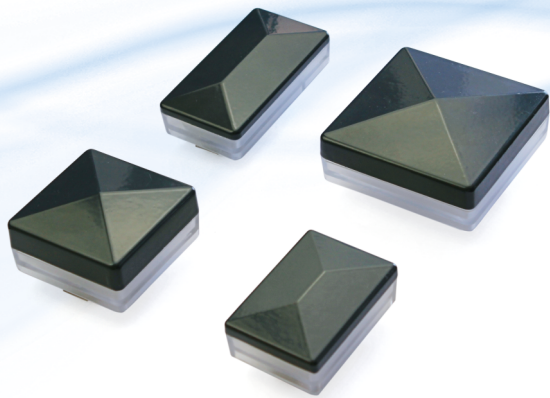
**ENERGY
-EFFICIENT
AND
MAINTENANCE
-FREE**

LEDSL



- decorative white lighting
- easy installation at the fence post
- 24VDC power supply

The LEDSL post lamp is a practical and elegant solution for metal, aluminum, and panel fencing systems. It guarantees excellent visibility, safety, and a modern design that blends seamlessly with any fence. Thanks to its energy-saving LED light source, the light is long-lasting and maintenance-free.



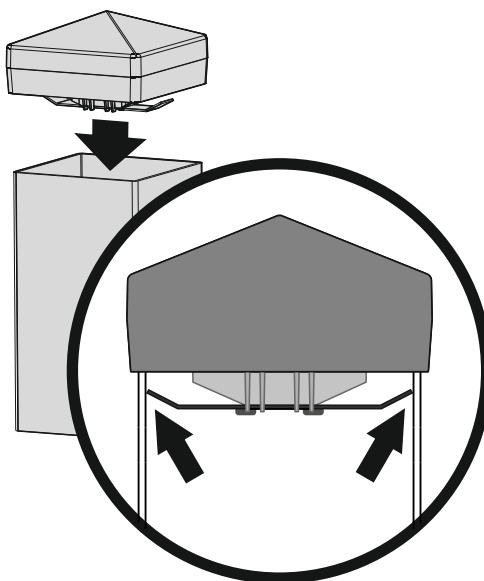
LEDSL 8080-RAL7016
LEDSL 6060-RAL7016
LEDSL 6040-RAL7016
LEDSL 604020-RAL7016

fence post lamp

Parameters

power supply: 24VDC
power: 2W
operating temperature: -20°C to +55°C
technology: LED
lifespan: 50 000h
intended use: decorative lighting
post dimensions [mm]: 80x80 / 60x60 / 60x40 /
60x40 + max 20
mounting method: push-in pole end
tightness class: IP 67
top element color: RAL 7016

Montage



Radio
Receivers

Remotes

Gate
Controllers

Gate
Automation
Accessories

Gate
Motors

Access
Control



automation systems

DTM System, ul. Brzeska 7, 87-145 Bydgoszcz, POLAND, tel./fax +48 52 340 15 83, e-mail: dtm@dtm.pl
www.dtm.pl

